

WinWin4WorkLife, a Horizon Europe research project, seeks to foster sustainable remote working arrangements (RWA) in Europe by integrating employer and employee perspectives to promote a healthy, inclusive and sustainable work-life balance across various urban, rural, and cross-border settings.

 winwin4worklife-eu-project

 @WinWin4WorkLife

 @WinWin4WorkLife

 WinWin4WorkLife



Join our panel by scanning this QR code !



Funded by the European Union. Views and opinions expressed are however those of the author(s) only and do not necessarily reflect those of the European Union or the European Climate, Infrastructure and Environment Executive Agency. Neither the European Union nor the granting authority can be held responsible for them.



do not throw on the street



Work with us to build healthy, inclusive and sustainable remote working arrangements !



# What is WinWin4WorkLife?

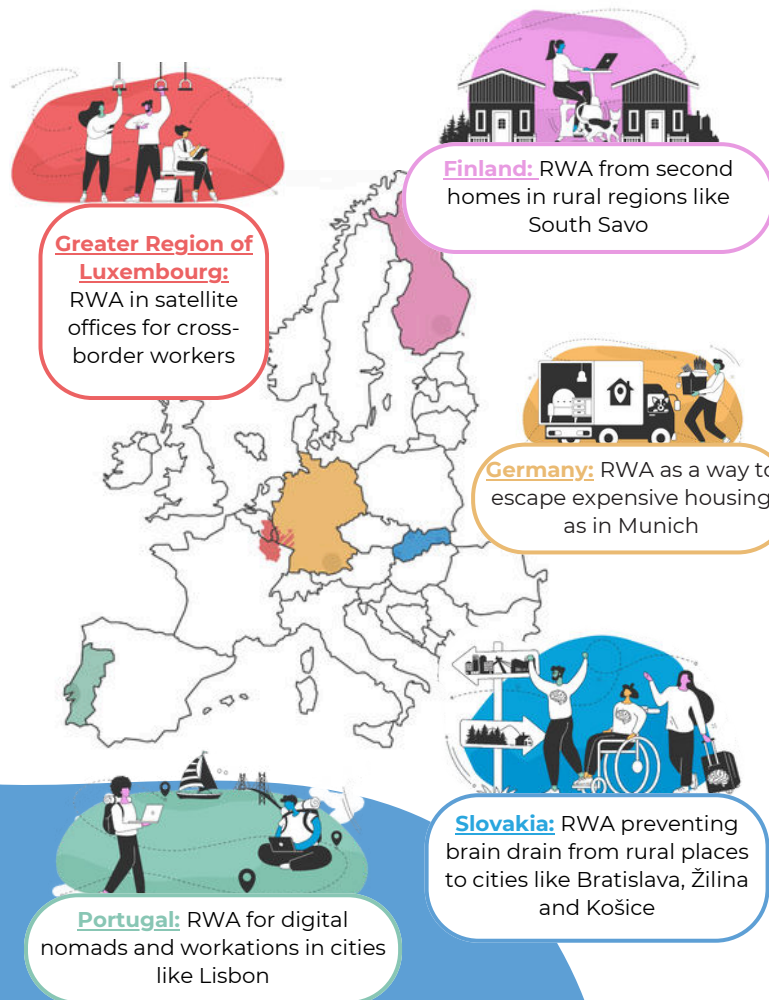
WinWin4WorkLife aims to delve into the intricate dynamics of Remote Working Arrangements (RWA), encompassing its social, economic, and spatial impacts. By integrating the perspectives of both employers and employees, we seek to cultivate a deeper understanding of remote work practices.

## Our Objectives :

-  **1. Interdisciplinary Approach:** By exploring environmental, social and economical aspects we aim to comprehensively understand the multifaceted nature of remote work.
-  **2. Healthy Work-Life Balance:** We will identify the key elements that contribute to a balanced work-life equilibrium and gender equity in remote work environments.
-  **3. Future Impacts of RWA:** Through spatial forecasting models, we will anticipate the impact of remote work on mobility, land use, and environmental health.
-  **4. Cultural Context Analysis:** We investigate how cultural norms and welfare systems influence the adoption of remote work practices.
-  **5. Evidence-Based Policies:** Our aim is to develop evidence-based spatial policies that promote sustainable and inclusive remote work practices.

# Case Study Sites

WinWin4WorkLife explores the practice of remote work across Europe through diverse case studies, analyzing its socio-economic and environmental impacts. Whether you're a digital nomad in Portugal or balancing work and life in your second home in Finland, your experiences are crucial as we shape the future of remote work together. Each of our case study sites offers unique insights into the multifaceted impacts of remote work practices.



# Let your voice be heard!

Are you a stakeholder from inside or outside of our case study countries? by scanning the QR's code, you will participate to the activities below :

Engage in an anonymous exchange of views with our survey, where a European panel of experts and stakeholders collaboratively shape the future of remote work. Through iterative rounds of feedback and consensus-building, we harness collective wisdom to inform our research agenda and policy recommendations.

## Stakeholder Survey

Join us in co-creation workshops where stakeholders and citizens come together to actively shape the trajectory of remote work policies and practices. Through collaborative brainstorming sessions and participatory decision-making, we foster inclusive dialogue and generate actionable insights for sustainable implementation of remote work arrangements.

## Co-creation Workshops

WinWin4WorkLife runs from February 2024 to July 2027